



eTwinning  
2023-2024

PINOCCHIO WANTS TO GO TO SCHOOL

## **THE WORKSHOP**

### **COLLABORATIVE ACTIVITY – TEACHERS' CORNER**

*TEACHER SOARE ANGELA, Scoala Gimnaziala "Sf. Andrei"  
Mangalia, ROMANIA*

*TEACHER WERONIKA KUS, Szkoła Podstawowa nr 17, 41-  
711 Ruda Śląska, POLAND*

*TEACHER DESPOINA VOGIATZI 4. základná škola  
Kalamaria Papagou & Kalidou 4, Thessaloniki, GREECE*

*TEACHER Mária Tremková, ZŠ s MŠ Dolné Orešany, 209,  
91902, Slovakia*

Hello! Do you know that you are the future? So you can offer your advice now in the present!

**A STUDENT CAN BE A MASTER!**



**LET'S TURN OUR SCHOOL INTO A WORKSHOP! LET'S FIND NEW FORMS, NEW SHAPES, NEW COLOURS AND NEW IDEAS FOR A SCHOOL BUILDING!**

**FROM THE VERY BEGINNING, LET'S BE:**

**INNOVATIVE**



**SMART**



**SINCERE**



**INCLUSIVE**



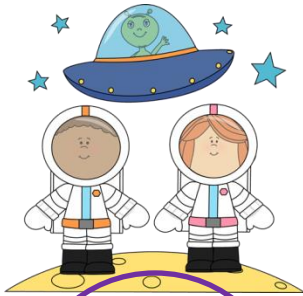
**VISIONARY**



let's help PINOCCHIO come back to school and  
become a REAL PERSON!



What is the form of your favourite school? Think  
about the future, too!



UFO  
SCHOOL



CASTLE  
SCHOOL



SCHOOL  
IN THE  
FOREST



BOARDING  
SCHOOL



SCHOOL IN  
A SHOE



ONLINE  
SCHOOL



eTwinning 2023-2024  
PINOCCHIO WANTS TO GO TO SCHOOL – THE ARCHITECTS

❖ **What is a nice building for you? Talk to your colleagues and let's gather ideas.**

.....  
.....  
.....  
.....  
.....  
.....  
.....  
.....  
.....  
.....

1. It is:  
a. tall                      b. short
2. It has got a roof:  
a. yes                              b. no
3. It has got:  
a. small windows              b. large windows
4. It is:  
a. nature-friendly                      b. solid
5. It is:  
a. simple and functional  
b. heavy, full of adornments

**NOW THINK ABOUT THIS!**

stone, brick, wood = heavy, solid buildings  
stoves, gas radiators = non-friendly building  
lack of gardens, too much stone and steel = pollution  
water waste = high costs

- WHY NOT ...**
- STEEL, GLASS, CONCRETE = LIGHT FUNCTIONAL BUILDINGS**
  - SOLAR PANELS, WINDTRAPS = NATURE-FRIENDLY BUILDINGS**
  - ROOF – GARDENS, LIVING WALLS = FRESH AIR**
  - RAINWATER COLLECTION = LOW PRICES, ECONOMY**





eTwinning 2023-2024  
PINOCCHIO WANTS TO GO TO SCHOOL – THE ARCHITECTS

---

- ❖ **Which of these schools is your favourite? They are considered the most innovative school buildings in the world.**



Baan Huay Sarn Yaw  
Post-Disaster School

**Chiang Rai,  
Thailand**



Hanazono  
Kindergarten and  
Nursery

**Okinawa,  
Japan**

eTwinning 2023-2024  
PINOCCHIO WANTS TO GO TO SCHOOL – THE ARCHITECTS

---



Hardenvoort passive  
campus for children  
and youngsters

**Antwerp,  
Belgium**



Plymouth School of  
Creative Arts

**Plymouth,  
UK**



eTwinning 2023-2024  
PINOCCHIO WANTS TO GO TO SCHOOL – THE ARCHITECTS

---



Tarawera High School

**Kawerau,  
New  
Zealand**



Ørestad Gymnasium

**Copenhagen,  
Denmark**

The school in a cube.

eTwinning 2023-2024  
PINOCCHIO WANTS TO GO TO SCHOOL – THE ARCHITECTS

---



Steve Jobs School

**Amsterdam,  
Netherlands**



**Innova  
Schools  
Peru**



eTwinning 2023-2024  
PINOCCHIO WANTS TO GO TO SCHOOL – THE ARCHITECTS

---

eTwinning 2023-2024  
PINOCCHIO WANTS TO GO TO SCHOOL – THE ARCHITECTS

---

eTwinning 2023-2024  
PINOCCHIO WANTS TO GO TO SCHOOL – THE ARCHITECTS

---